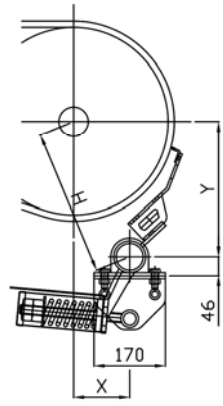
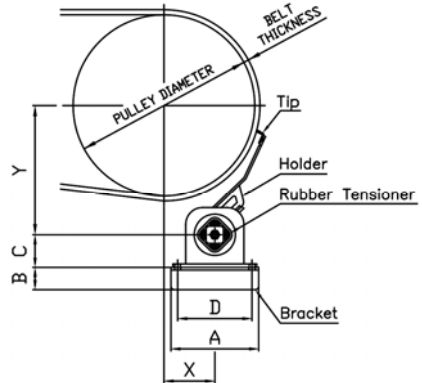
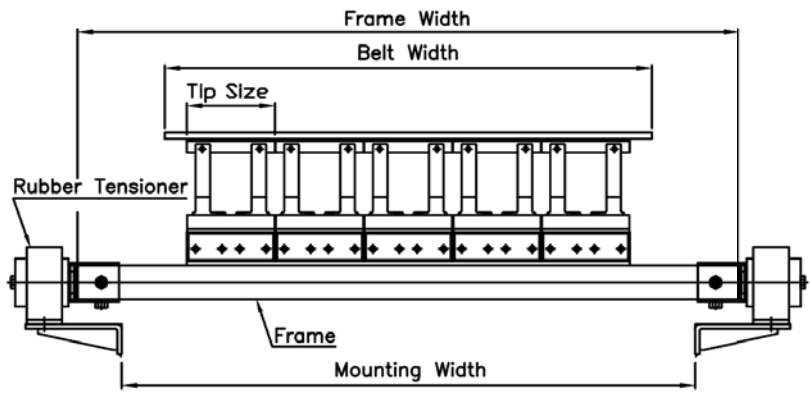


LAUTEC Belt Cleaner H 200 Type



Tensioner Option

Tensioner	Tensioner Model	Belt Width
LAUTEC Rubber Tensioner	5LH - 130	1050 - 1200
LAUTEC Rubber Tensioner	5LH - 160	1400 - 1600
LAUTEC Rubber Tensioner	5LH - 220	1800 - 2200
LAUTEC Spring Tensioner	SPLH - M	1050 - 1600
LAUTEC Spring Tensioner	SPLH - L	1800 - 2200

※ The above standard drawing drawings because LAUTEC along the conveyor belt Pulley Diameter standard technical specifications are subject to change.

This drawing is confidential property of LAUTEC CO. and disclosure, reproduction and copy of all or part of the drawing without written consent of LAUTEC CO. is prohibited. All rights including patent and copyright are reserved.

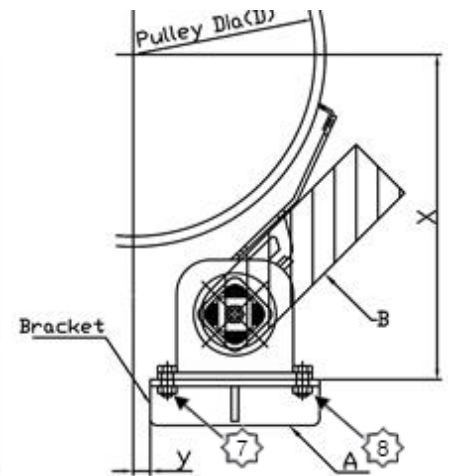
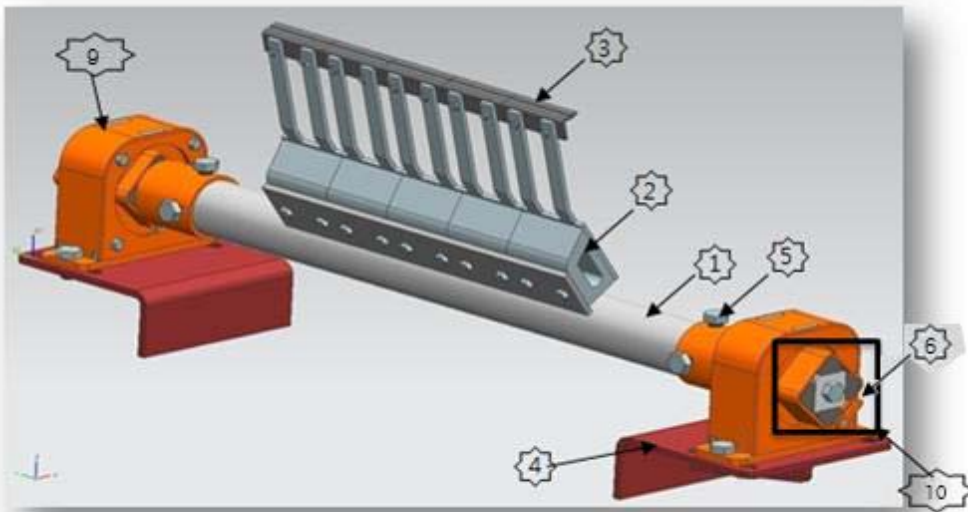
Tensioner Option

Model	Tip size	Belt width	Tip Quantity	Frame Length	Frame PIPE	A	B	C	D
LAH-1200	200	1200	5	1680	∅76.3	256	65	95	217
LAH-1400	200	1400	6	1880	∅76.3	256	65	95	217
LAH-1600	200	1600	7	2080	∅76.3	256	65	95	217
LAH-1800	200	1800	8	2280	∅76.3	256	65	95	217
LAH-2000	200	2000	9	2480	∅89.1	256	65	95	217
LAH-2200	200	2200	10	2680	∅89.1	256	65	95	217

Pulley diameter	Tip 200	BW 350 ~ 1050
	Cleaner holder	H
500 ~ 800	HS-2	240(mm)
800 ~ 1000	HM-2	268(mm)
1000 ~ 1200	HL-2	295(mm)

※ The above standard drawing drawings because LAUTEC along the conveyor belt Pulley Diameter standard technical specifications are subject to change.

H-TYPE BELT CLEANER- Installation Manual



Product Specifications

1. CP Cleaner Body High Pressure Pipe (STPG) that in the standard form referred to as melt-plated - ①
2. CP Cleaner Holder - ②
3. CP Cleaner carbide tips - ③
4. CP Cleaner Mounting Plate - ④
5. CP Cleaner Body mounting bolts - ⑤
6. CP Cleaner Pressure Devices - ⑥
7. CP Cleaner pressure adjustment bolt - ⑦
8. After adjusting the pressure mounting bolts - ⑧

INSTALLATION(설치)

1. In accordance with the installation drawings Pulley Center 4 (mounting plate) is installed X. Marking Y is the distance.
2. 1 (Cleaner Body) in accordance with the installation drawings Shute enough to fit wall OPEN (B) causes.
3. 4 (installation plate) Marking is welded to the left and right side Shute.
4. 1 (Cleaner Body) and Shute wall where the cut surface and slide the belt three times (tip), and then make a horizontal five times (fixed bolt) makes sure to tighten.
5. "Zeroing" - 7 (pressurized vault) return belt side and three times (Tip) of the front and back will be a match.
- 6 "Cleaner pressure" pressure on the side arrow to show a marked ↓ return if the grid scale pressure from the 2-3 is completed.
7. Pressure after the completion of eight times (pressure mounting bolts) to fix.
8. Cleaner efficient pressure drops should be pointed in the same way as before.